

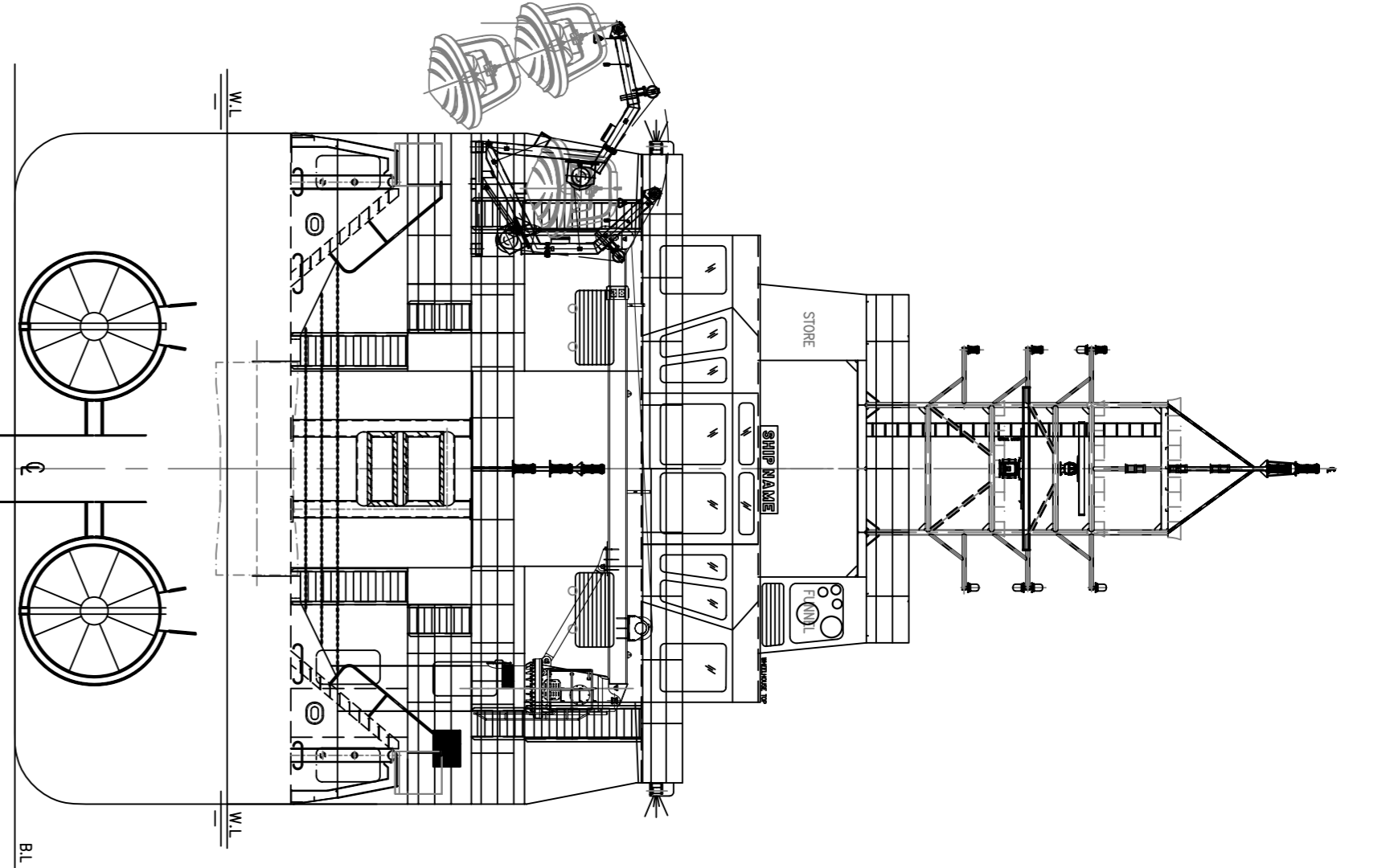
**PRINCIPAL DIMENSIONS**

	(O.A.)	(W.L.)	(B.P.)
LENGTH	60.500	58.216	54.500
BREADTH	11.400	11.400	11.400
BEAM (M.L.D.)	15.800	15.800	15.800
DEPTH (M.L.D.)	6.500	6.500	6.500
DESIGN DRAFT	5.200	5.200	5.200
FUEL OIL	560	560	560
FRESH WATER	370	370	370
DRILL WATER / W.B.	590	590	590
MUD / BRINE	270	270	270
DRY BULK TANKS (4x1500 FT <sup>3</sup> )	170	170	170
CLEAR DECK AREA / COVERED DECK AREA	280/80	280/80	280/80
DECK CARGO (DECK LOADING = 7T/M <sup>2</sup> )	400	400	400
MEZZ DECK AREA	170	170	170
MEZZ DECK CARGO	40	40	40
MAIN PROPULSION ENGINE	2 X 3400 HP	2 X 3400 HP	2 X 3400 HP
SPEED (TRIALS)	12.5	12.5	12.5
BOLLARD PULL	85-145	85-145	85-145
COMPLEMENT	14	14	14

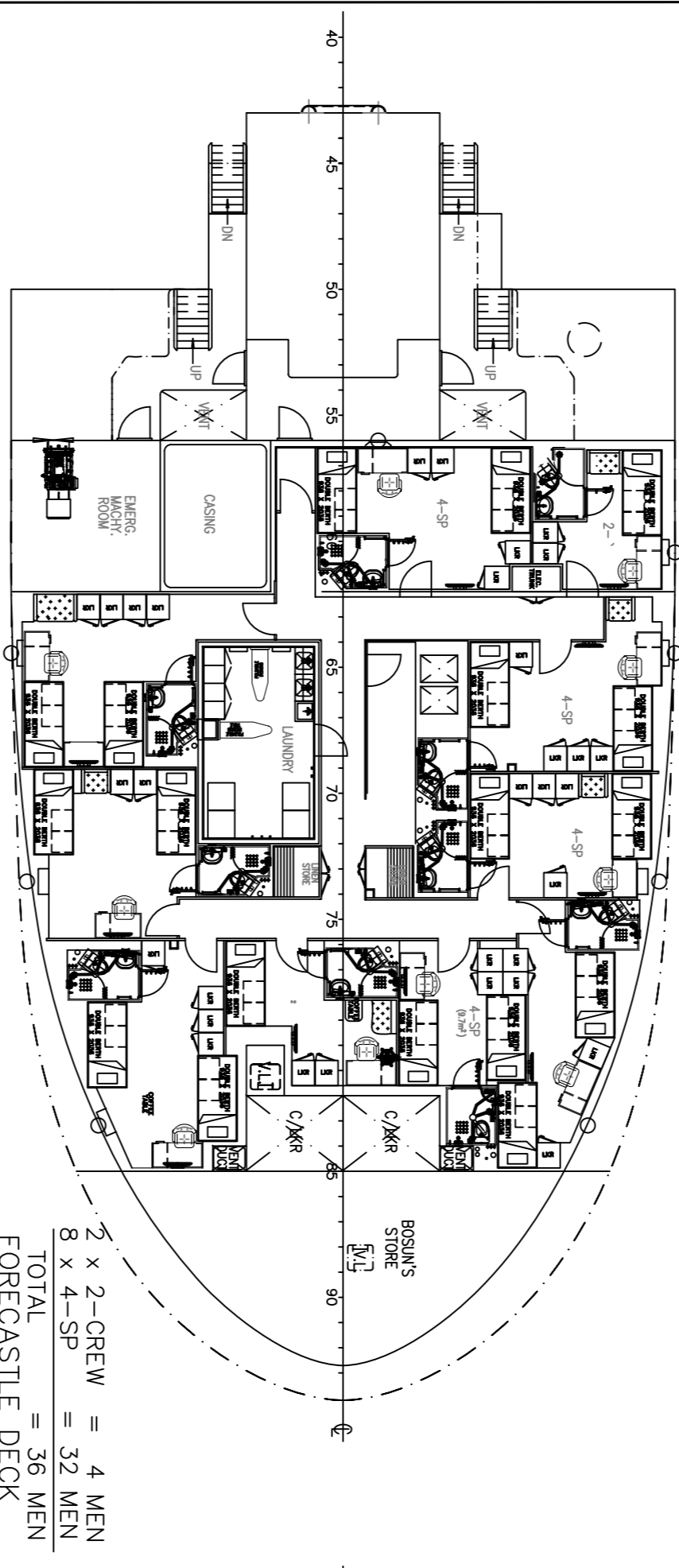
**CLASS NOTATION**

**M1 MAMS E** OFFSHORE SUPPORT VESSEL SUPPLY, AH, TOW, FFV) SPS, DMS-2, UMLD, CRC, RW

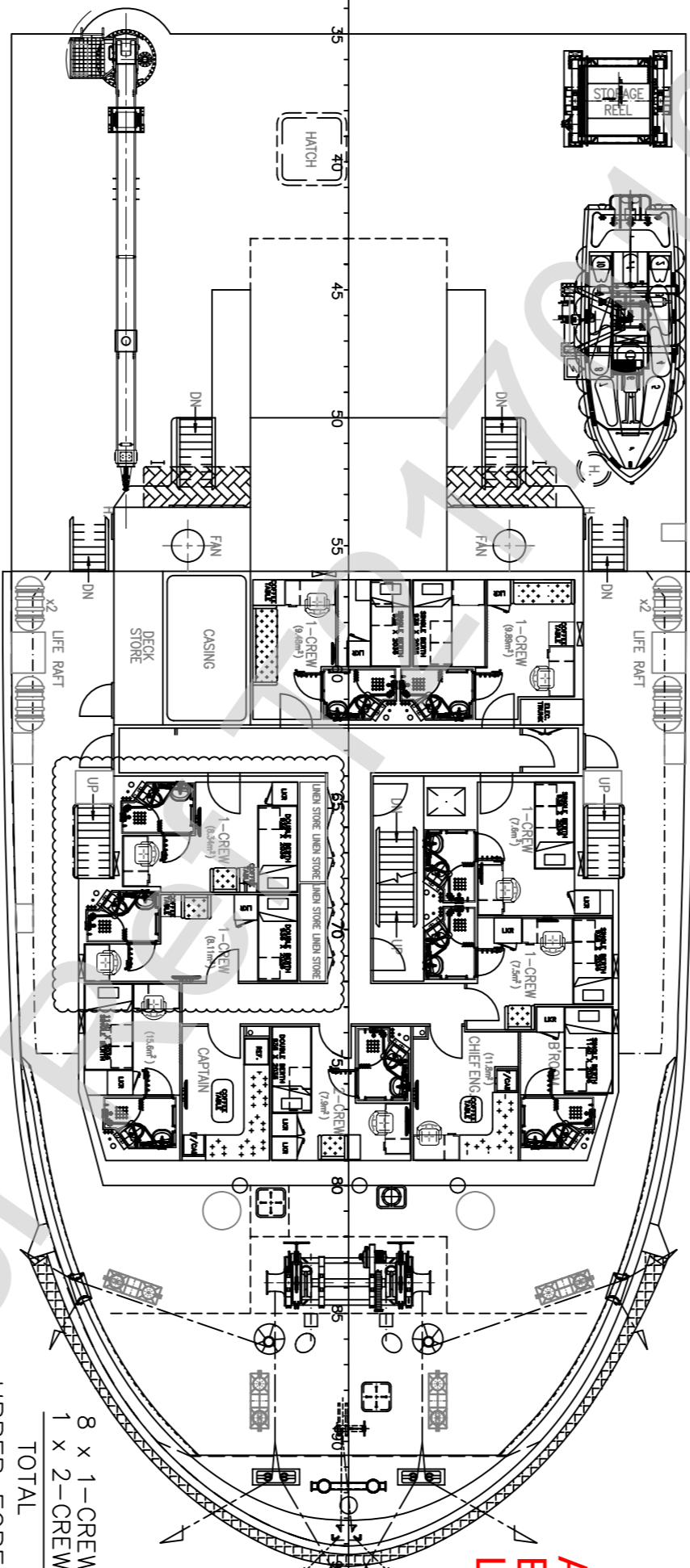
CREW PERSONNEL - 14 MEN  
SPECIAL PERSONNEL - 32 MEN



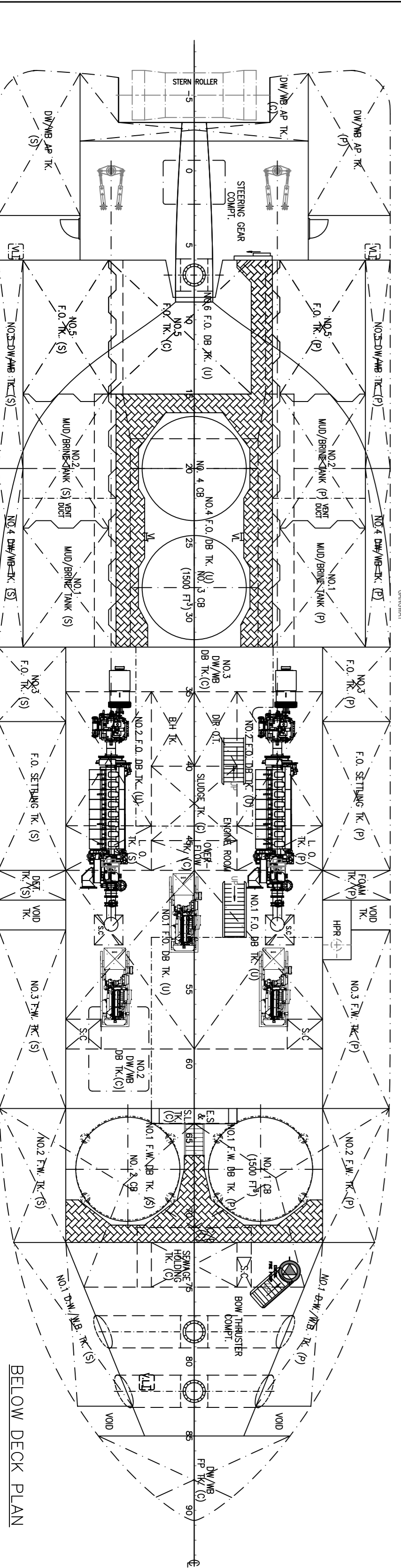
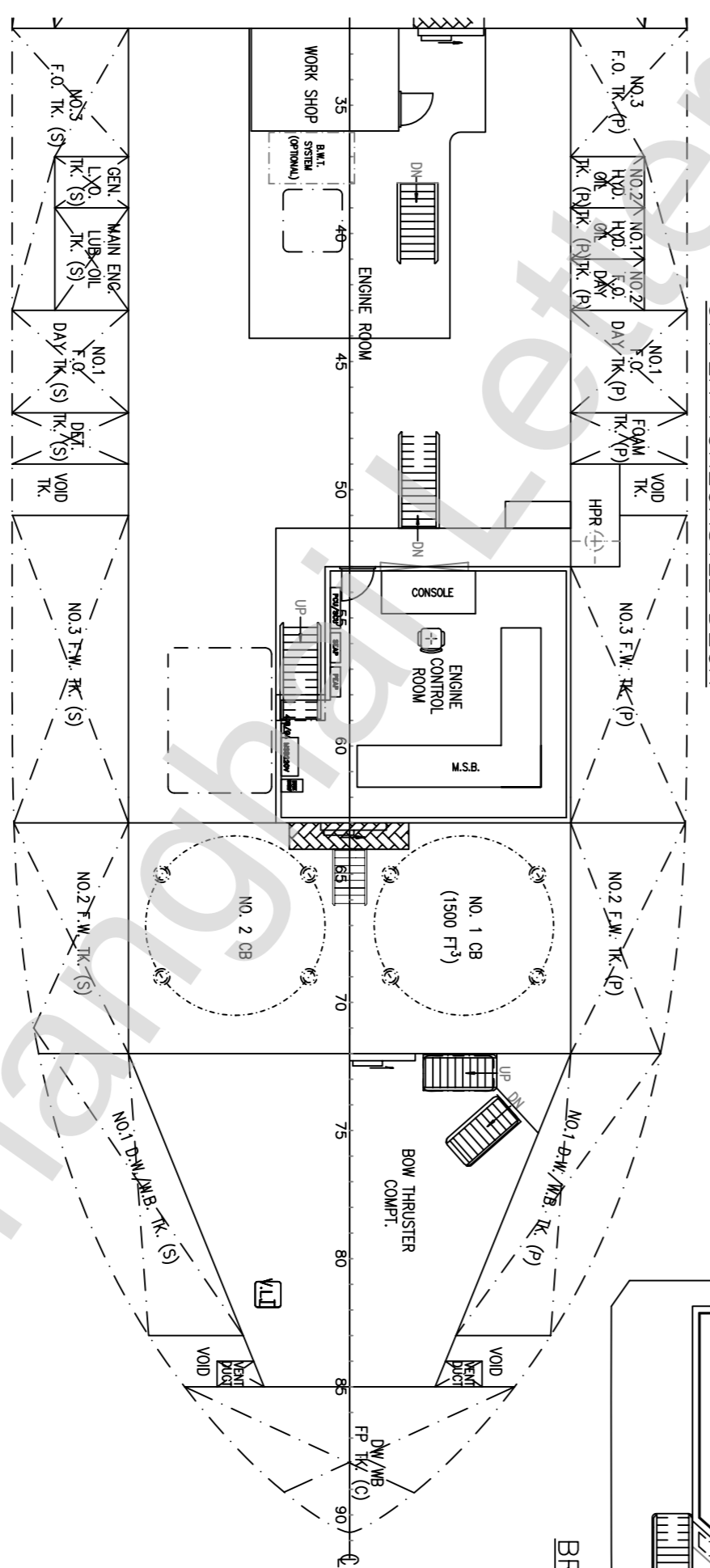
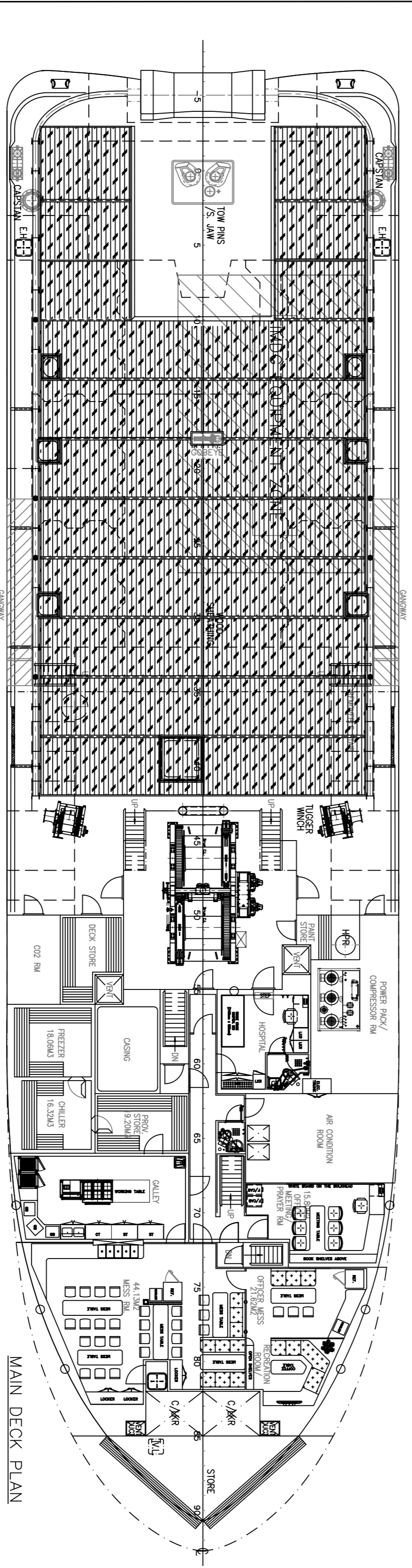
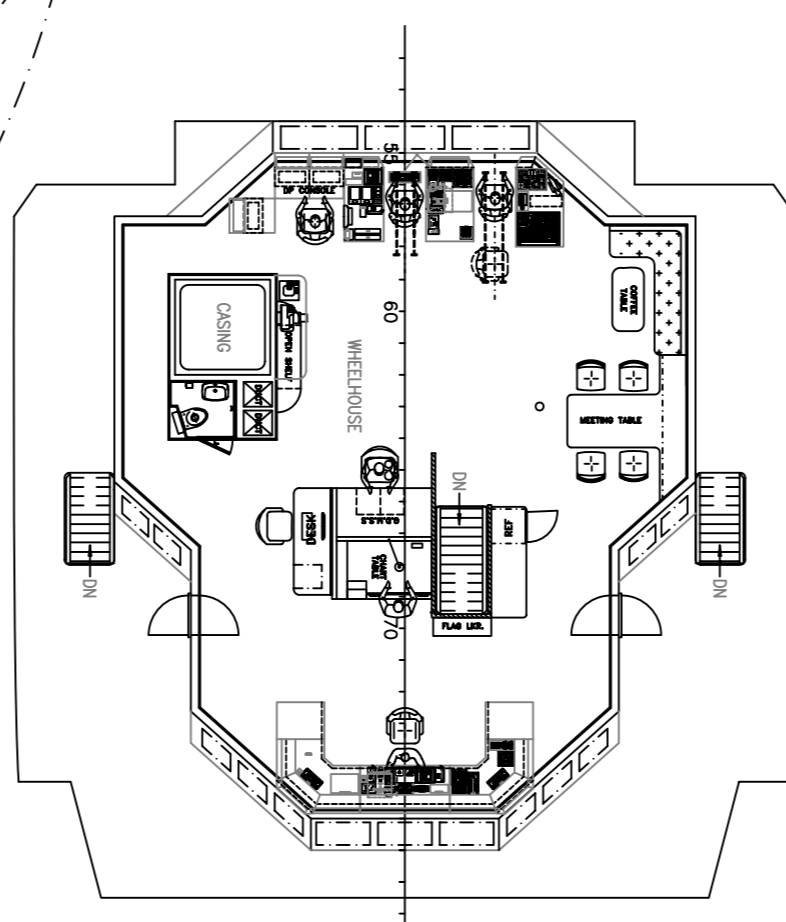
**AN INDIVIDUAL SLEEPING ROOM SHALL BE PROVIDED FOR EACH SEAFARER AS PER MLC 2006 A3.1.9(A). SEE COMMENT L-034 IN LETTER.**



2 x 2-CREW = 4 MEN  
8 x 4-SP = 32 MEN  
TOTAL = 36 MEN



8 x 1-CREW = 8 MEN  
1 x 2-CREW = 2 MEN  
TOTAL = 10 MEN



**REVIEWED**

Details of this review are as indicated in the ABS letter

**ABS**

WITH ABS AMENDMENTS ON PAGES N/A

WITH ABS COMMENTS #s L-034

- NOTE:-**
- THE BALLAST WATER TANKS/DRILLING WATER TANKS ARE NOT DEDICATED SEAWATER BALLAST TANK, AND ANY LOAD DRILL WATER ON MASTERBOARD BALLAST TANK, AND ANY LOAD EXCESSIVE ON MASTERBOARD BALLAST TANK, SHOULD BE STORED IN REG I-1/68 OF SOLAS 1974 AS AMENDED.
  - EXCESSIVE AN UNWARRANTED BOTTOM DAMAGE SHOULD BE AVOIDED.
  - THE DOOR TO STEERING GEAR COMPARTMENT ACCESS TRUNK ARE TREATED AS NON-WATERIGHT.
  - SWITCHLIGHT IS PROVIDED FOR THE 2-CREW RM. AT FR-76-82 ON FORECASTLE DECK.
  5. SWITCHLIGHT IS STORED IN BOW THRUSTER COMPT.
  7. WHERE DOORS OPEN INTO CORRIDOR APPROPRIATE ARRANGEMENT TO BE PROVIDED TO AVOID INJURY TO PERSON.
  8. A TOE BOARD OR KICK PLATE IS RECOMMENDED TO BE INSTALLED ON THE DECK BELOW THE LOWER RAIL COURSE.
  9. M/W/B/TANKS SHALL CARRY POLLUTION HAZARD ONLY SURVIVAL SWAGES HAVING A FLASHING POINT EXCEEDING 60°C LISTED IN IMO A573.

广新海事重工股份有限公司 GUANGXIN SHIPBUILDING & HEAVY INDUSTRY CO., LTD.		船号	GS13176
图号	SHH6013-051-01	HULL NO.	
图名	60.5M UMLD-POURPOSE OFFSHORE SUPPORT VESSEL	FINAL DRAWING	
设计	60.5米多用途支持船	完工图	
设计日期		共 1 页	PAGE NO.
校对		总布置图	TOTAL
审核		GENERAL ARRANGEMENT	
批准		总布置图	
批准日期			
比例	1:100	重量	
材料		重量(Kg)	
标准		REV	1
单位			

比例: 1:50m