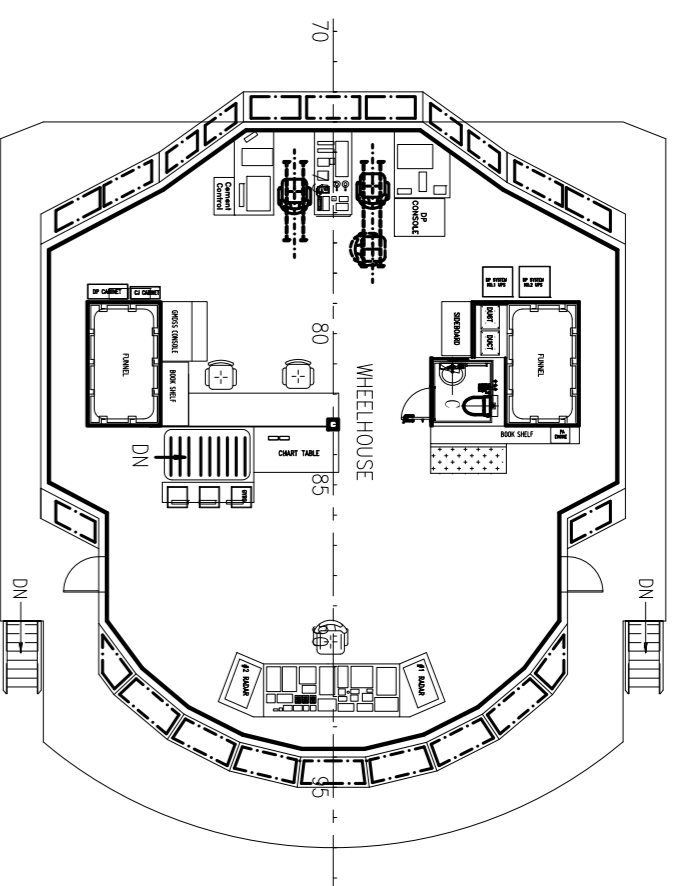
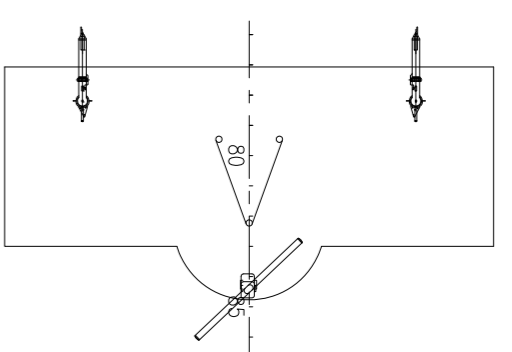


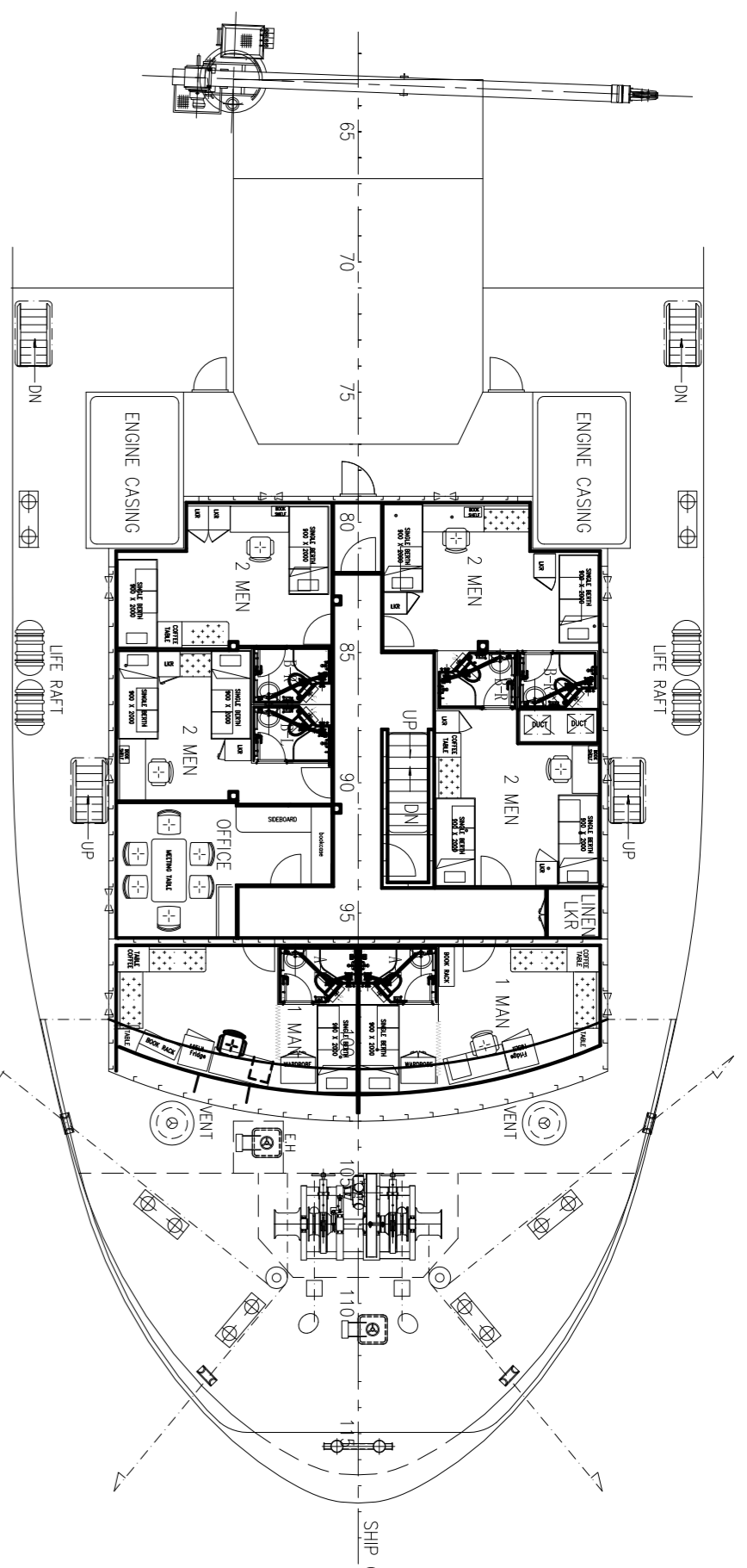
OFFICER DECK 6 x 1 MAN = 6 MEN



NAV. BRIDGE DECK

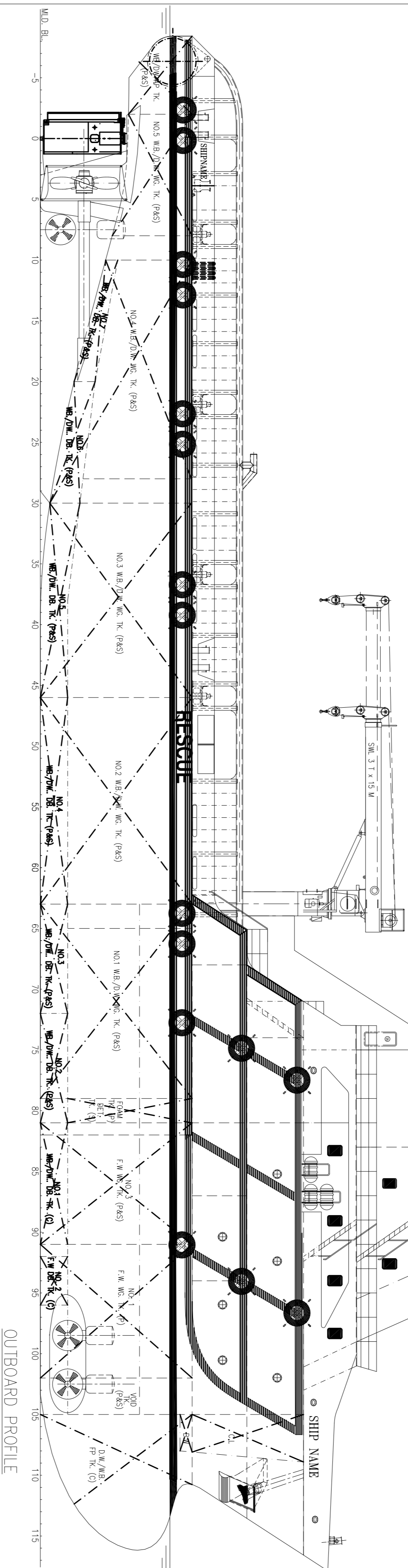


FI PLATFORM

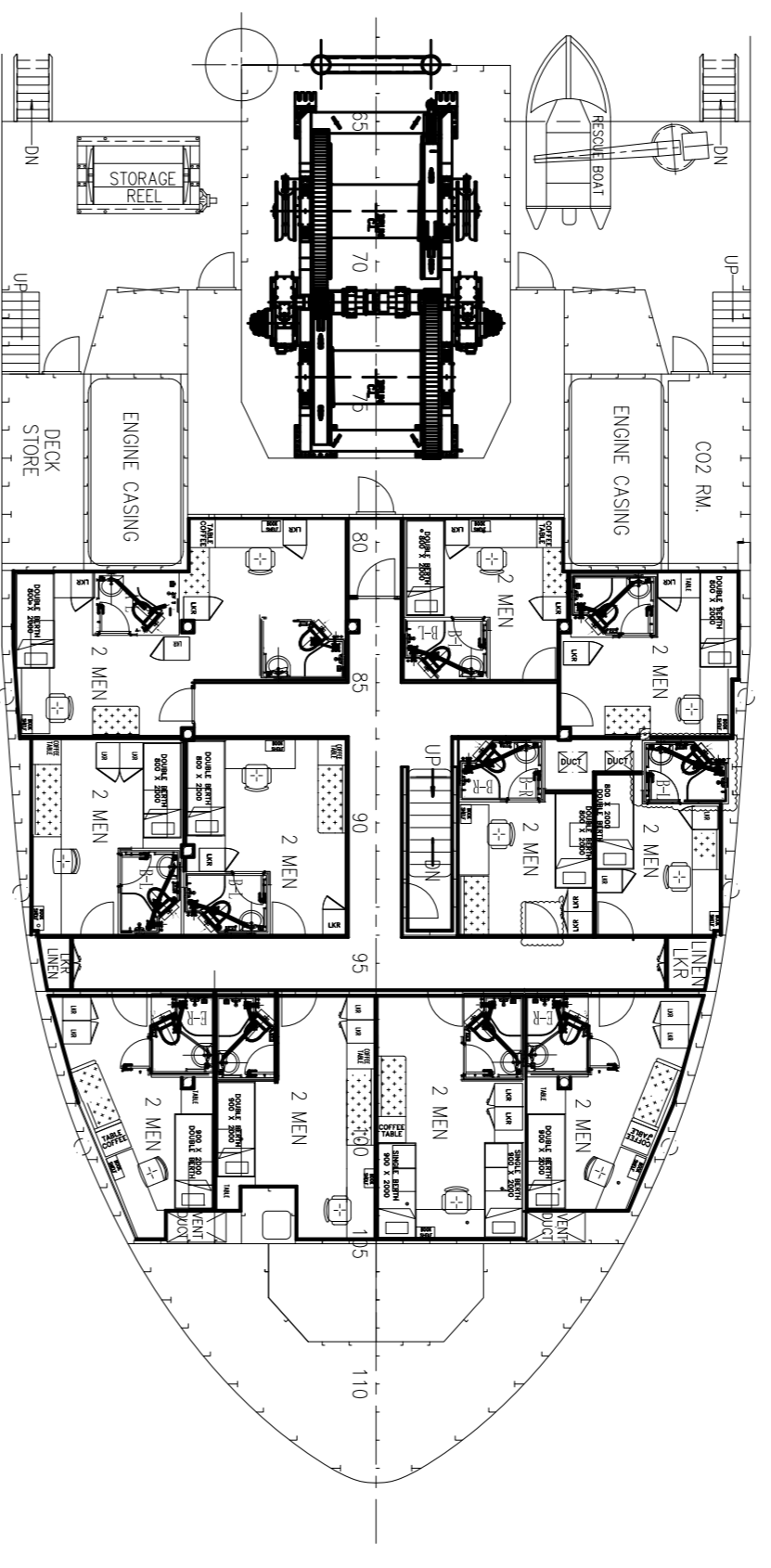


UPPER FORECASTLE DECK PLAN

2 x 1 MAN = 2 MEN  
4 x 2 MEN = 8 MEN  
TOTAL = 10 MEN

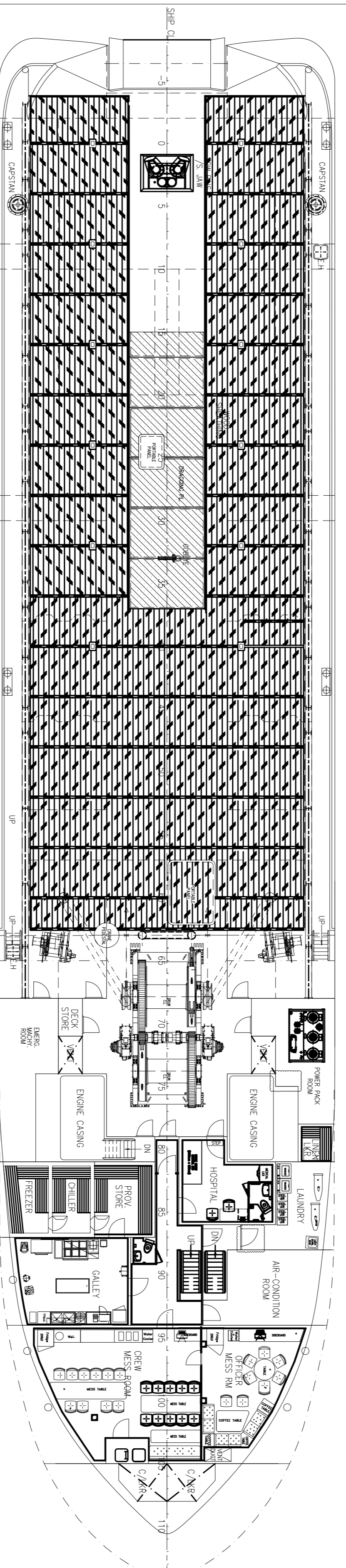


OUTBOARD PROFILE

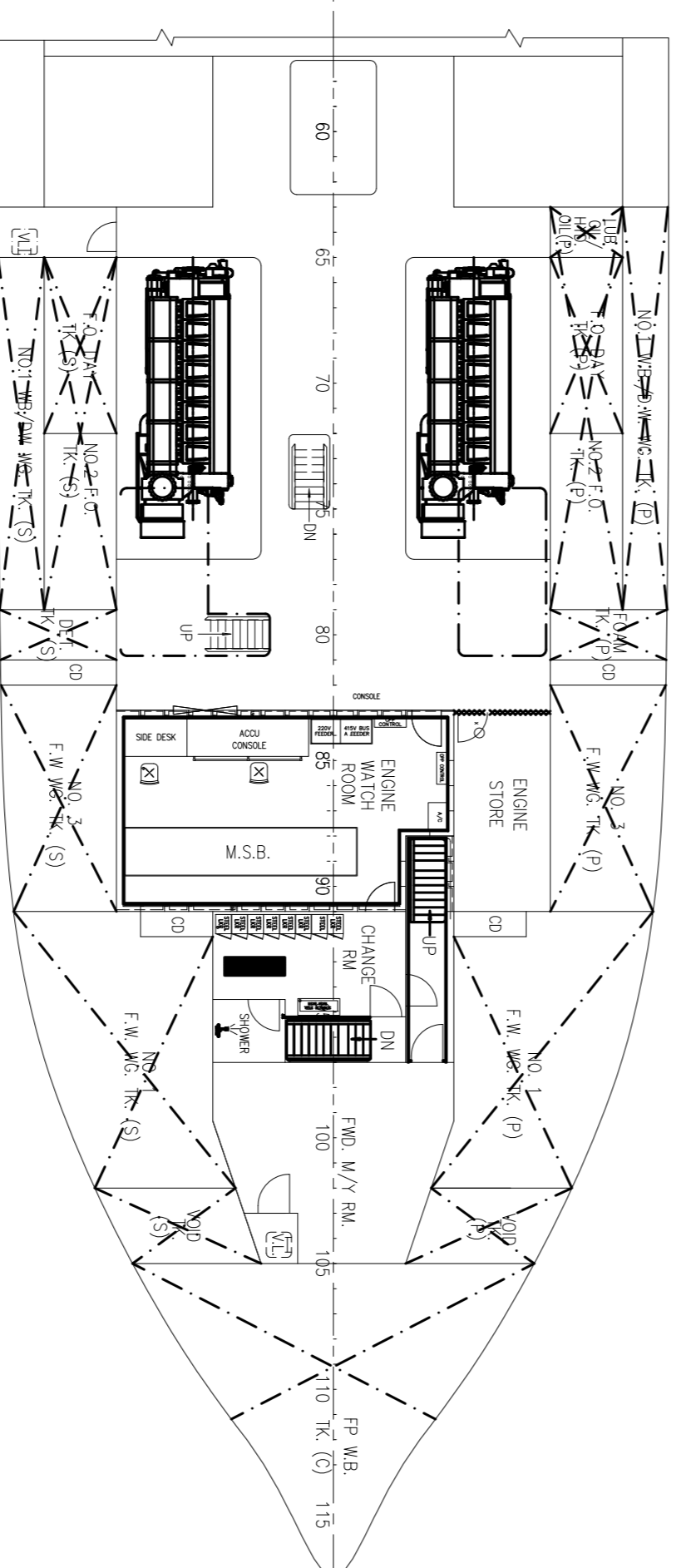


FORECASTLE DECK PLAN

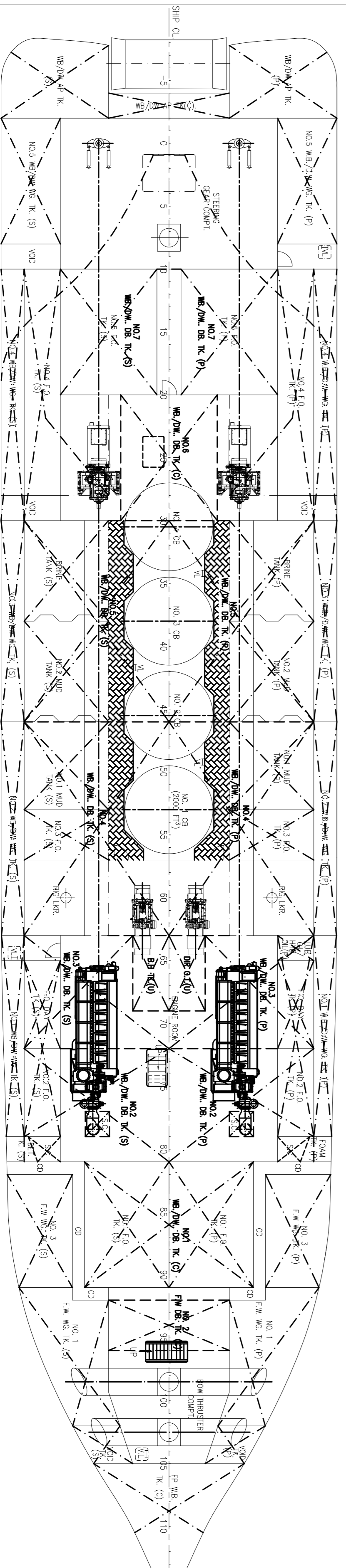
12 x 2 MEN = 24 MEN



MAIN DECK PLAN



TWEEN DECK PLAN



BELOW DECK PLAN

PRINCIPAL DIMENSIONS

LENGTH (O.A.) 76,000 M  
LENGTH (B.F.) 72,980 M  
LENGTH (L.P.) 67,980 M  
BEAM (M.L.D.) 16,000 M  
MAX. DRAFT (M.L.D.) 7,500 M  
MAX. DRAFT (M.L.D.) 28,500 M  
TOTAL DWT AT 6.40M 61,000 TONS  
FRESH WATER 375 M<sup>3</sup>  
BRINE 400 M<sup>3</sup>  
CLEAR DECK AREA 500 M<sup>2</sup>  
DECK CARGO (DECK LOADING = 7.5T/M<sup>2</sup>) 800 TONS  
DRY BULK CARGO (4x2000 FP = 8000 FT<sup>3</sup>) 226 M<sup>3</sup>  
TOTAL CARGO CAPACITY 1026 TONS  
SPEED (TRIALS) 24.149 KNOTS  
ROLLARD PULL 110 TONS  
COMPLEMENT 40 MEN

CLASS & NOTATION : ABS \* AT @ OFFSHORE SUPPORT VESSEL AH,  
TOWING VESSEL, FIRE FIGHTING VESSEL CLASS 1,  
\*AWS \*DPS-2

THIS DOCUMENT AND THE INFORMATION IT CONTAINS ARE THE PROPERTY OF KHIAM CHUAN MARINE PTE LTD. IT IS NOT TO BE COPIED OR REPRODUCED IN WHOLE OR IN PART OR DISCLOSED TO ANY THIRD PARTY WITHOUT WRITTEN CONSENT.

6	WAKAMU DRAFT AMENDED AS 6.4M	VIAMANCE	16.06.12
5	AMENDED AS PER DRC "DESIGN PLAN"	XIEJIN	02.09.11
4	CANCEL THE OWSAQUAM RV AS PER OWNER'S COMMENTS	XIEJIN	22.02.11
3	AMENDED AS PER VARD'S COMMENTS	ZHENGLIANG	05.01.10
2	AMENDED AS PER VARD'S COMMENTS	XIEJIN	31.03.10
1	FORE END OF DECK HOUSE MODIFIED TO BE ROUND SHAPE	TONG	16.06.08
REV.	DETAILS OF MODIFICATION	BY	DATE

PROJECT: 75m ANCHOR HANDLING SUPPLY VESSEL  
GENERAL ARRANGEMENT

CLASSIFICATION	HULL NO.	H1082X10
DRAWN	CHECKED	SCALE
12-11-07	1:150	KCM/0558(A)-01
6		